



# A RULE-BASED PORTFOLIO MANAGER

FEBRUARY 2024

## **Portfolio Management Services**

For private circulation only. This presentation contains 47 slides and must be viewed in its entirety.



# ONE OF INDIA'S **LARGEST** MUTUAL FUND DISTRIBUTOR

## A BUSINESS BUILT ON TRUST

Our mission is to transform the lives of people across India by ensuring their financial well-being. With a humble beginning in 1994, we are privileged today to impact the lives of countless families. A reputed name in the financial services industry, **NJ Group** today is expanding its horizons into diverse businesses.

We are driven with the passion for transforming lives, and we value trust above everything.

We are **BUILT ON TRUST**



Started  
**1994**



Employees  
**1900+**



Active Distributors  
**36,322+**



Assets Under Management  
**₹1,91,793\*+** Crore

\*Asset managed by various AMCs, mobilised by NJ | As on February, 2024



NJ Group's PMS business commenced in the year 2010. The total Assets Under Management (AUM) currently are **INR 3,950+ Crores** (As on February 29th, 2024) with approximately **3,545+** investors.

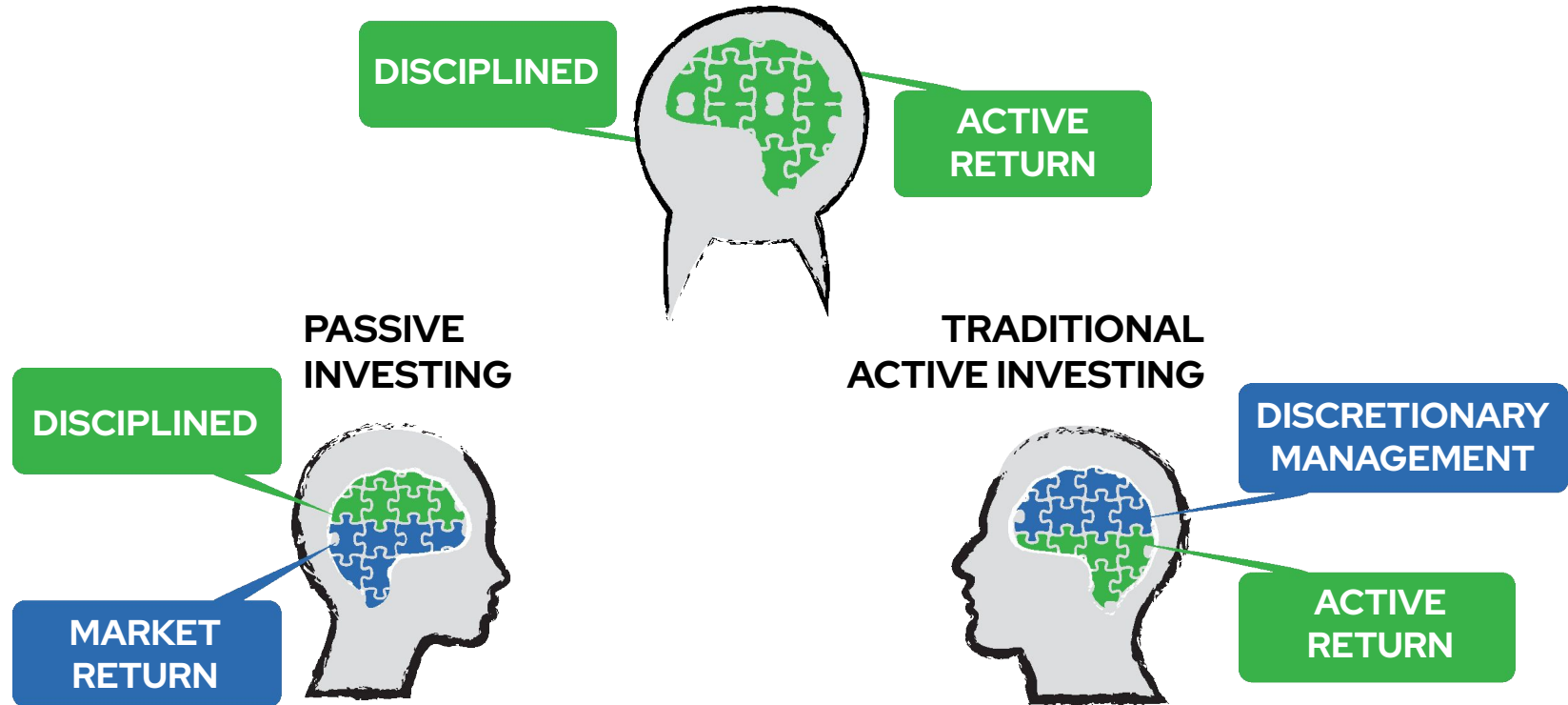


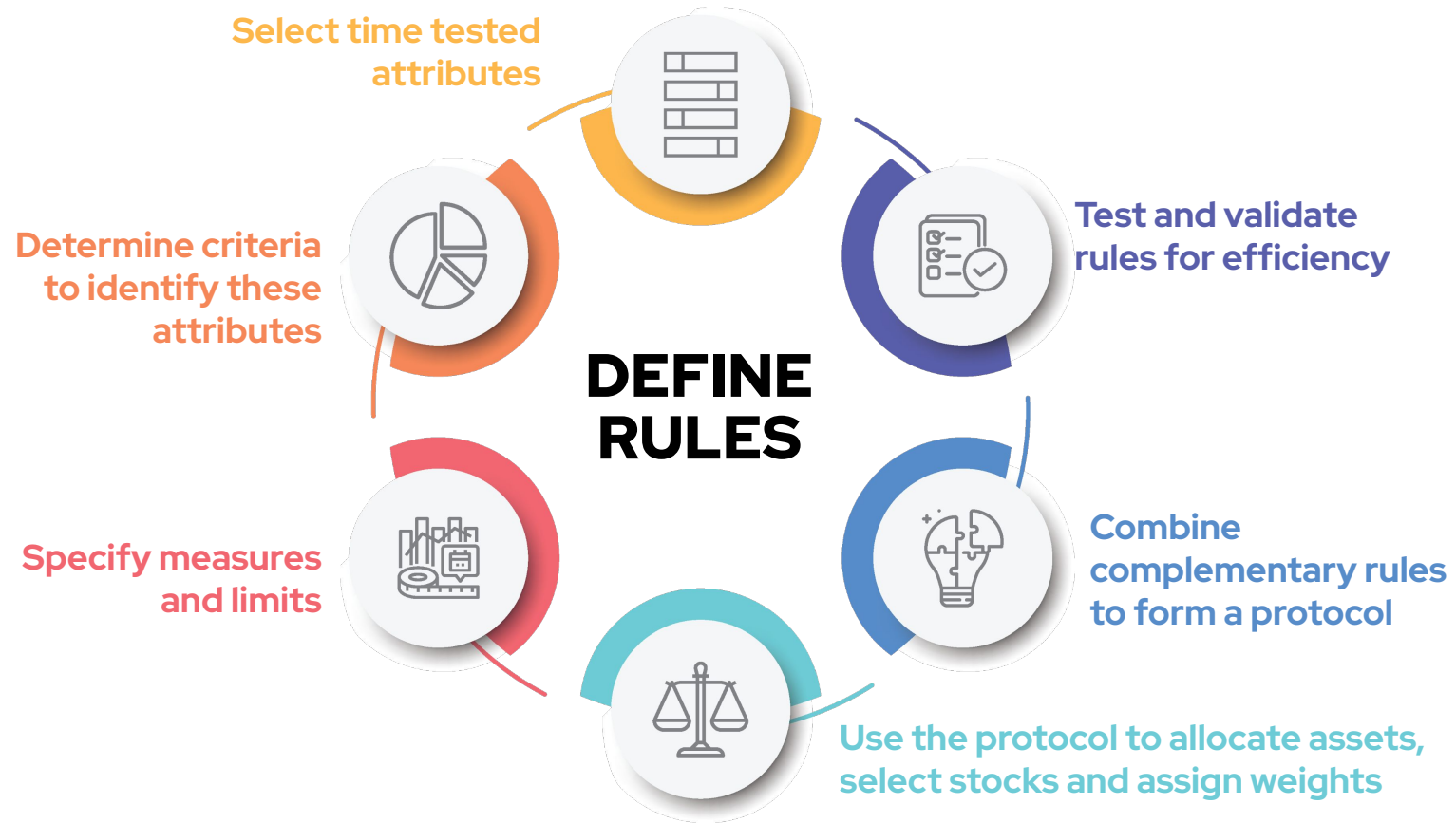
NJ PMS offers to investors an array of products investing across Equities, Mutual Funds and ETFs.

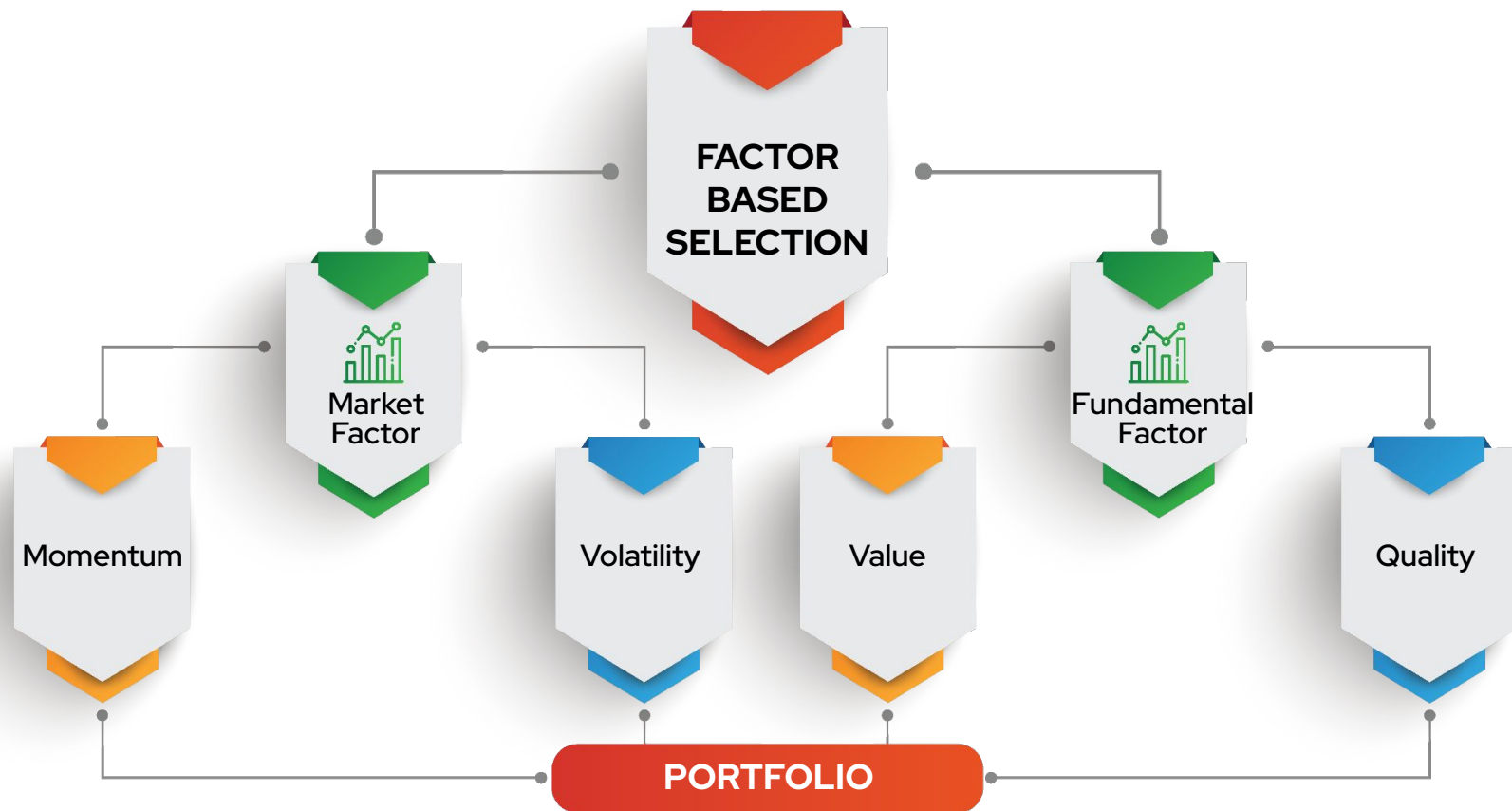


NJ PMS follows the '**Rule-Based Investing**' strategy for the framework of its Portfolio Management proposition.

### RULE-BASED INVESTING









Selection of securities is on a predefined set of rules, eliminating human bias.



The investment process is pre-tested for performance and volatility in various scenarios.



The Portfolio stays **"True to Label"** at all times.

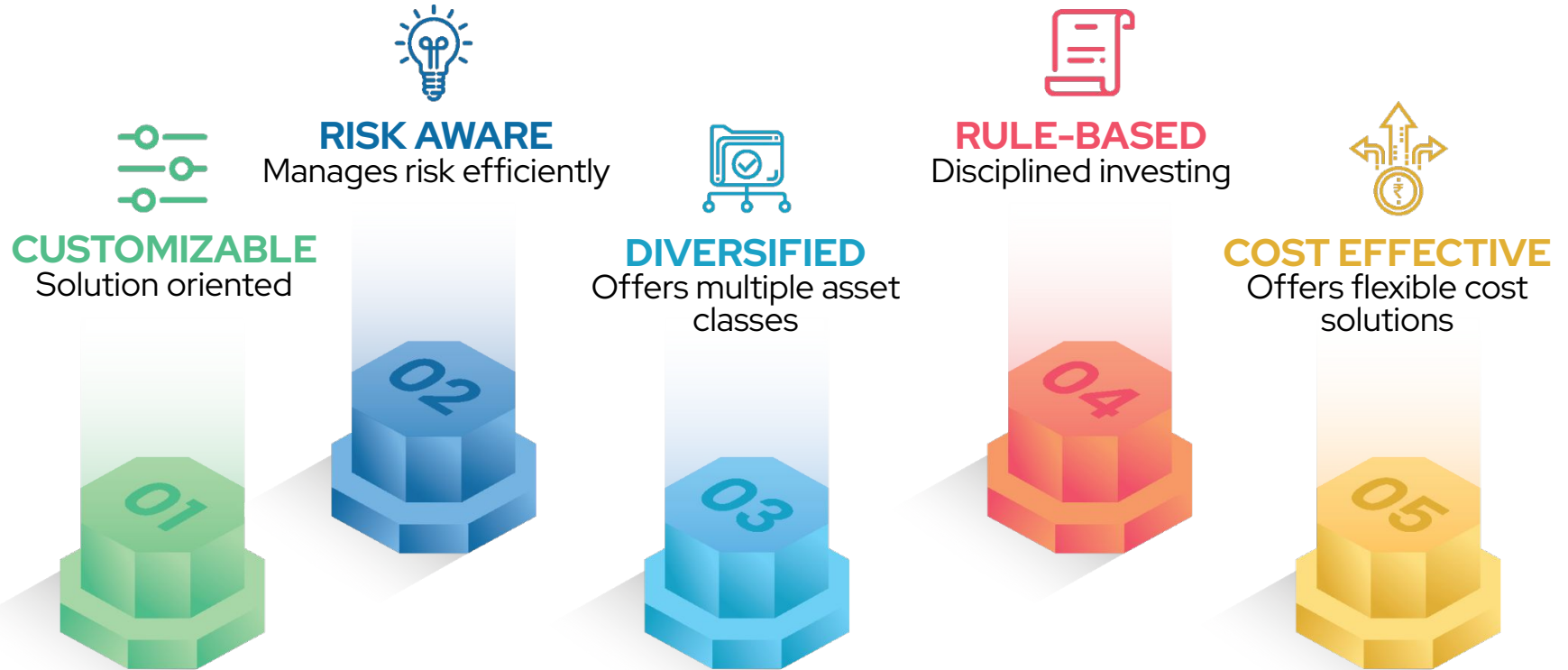


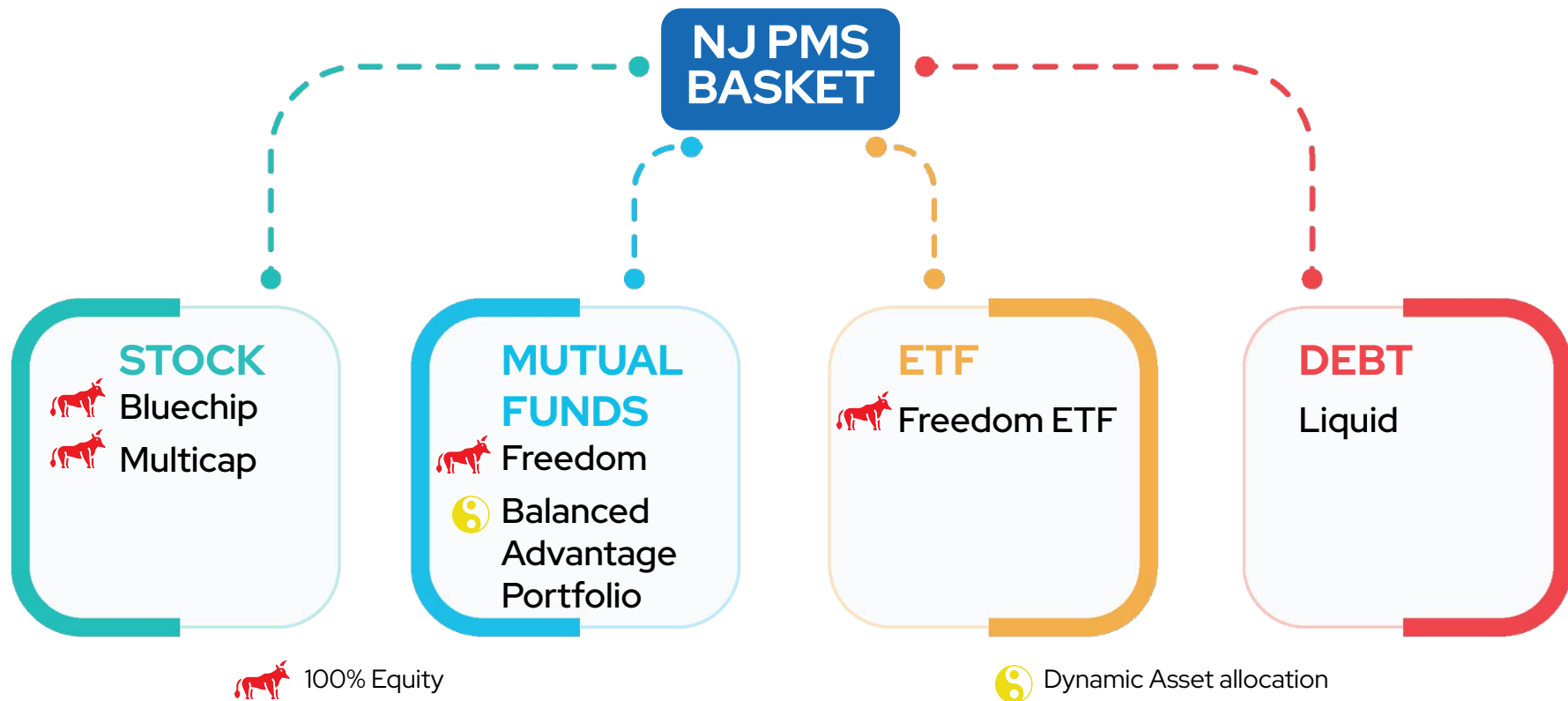


## CONVENTIONAL PMS MECHANISM



## 5 PILLARS OF INVESTING AT NJ PMS







### Investment Objective:

- To generate capital appreciation over a long term by investing in equity and equity related instruments.

### The investment approach is as summarised below :

- Rule-based stock selection
- Focus on companies with superior quality over a long period with high ROE and cash rich companies with high dividend paying capabilities
- Preference for companies with lower volatility in returns and avoid loss making companies
- Portfolio would be reviewed for re-balancing on a yearly basis
- Allocation would be 80% to 100% in equity and equity related securities and 0% to 20% in debt oriented mutual funds, cash, liquid funds and arbitrage funds.

For detailed risk factors associated with investment approach, please refer to the Disclosure Document available on our website [www.njpms.in](http://www.njpms.in)



- Model portfolio based weights allocated with a maximum threshold of 8% per stock at the time of rebalancing and 10% during the period of holding
- Portfolio would be reviewed for re-balancing on a yearly basis which would reduce churn while still providing high risk-adjusted returns based on model backtesting results
- This investment approach is 100% equity and the relevant benchmark is NIFTY 50 TRI.

## 1 & 3 YEARS ROLLING RETURNS OF BLUECHIP PORTFOLIO AS ON FEBRUARY 29, 2024

	1 YEAR ROLLING RETURNS		3 YEAR ROLLING RETURNS	
	BLUECHIP PORTFOLIO	NIFTY 50 TRI	BLUECHIP PORTFOLIO	NIFTY 50 TRI
Count	1815	1815	1085	1085
Average Return	16.86%	15.59%	21.00%	17.76%
Medium	8.35%	12.27%	20.60%	16.86%
Maximum	94.71%	96.65%	32.08%	32.39%
Minimum	-22.40%	-32.69%	12.44%	10.41%
Out Performance against NIFTY 50 TRI	48.93%	-	71.34%	-

Performance data upto 12 months are Absolute Returns; Performance data more than 12 months are CAGR.TWRR provided above are post expenses. The above performance data is not verified by SEBI. Past performance may or may not be sustained in future and does not guarantee future return.The Portfolio Manager offers the option of direct onboarding of clients under Discretionary Services.

## 4 & 5 YEARS ROLLING RETURNS OF BLUECHIP PORTFOLIO

	4 YEAR ROLLING RETURNS		5 YEAR ROLLING RETURNS	
	BLUECHIP PORTFOLIO	NIFTY 50 TRI	BLUECHIP PORTFOLIO	NIFTY 50 TRI
Count	720	720	354	354
Average Return	16.47%	14.55%	13.99%	13.99%
Medium	16.37%	14.70%	13.12%	13.56%
Maximum	20.61%	19.77%	19.08%	17.22%
Minimum	11.75%	10.40%	10.45%	11.73%
Out Performance against NIFTY 50 TRI	94.30%	-	52.26%	-

Performance data upto 12 months are Absolute Returns; Performance data more than 12 months are CAGR.TWRR provided above are post expenses. The above performance data is not verified by SEBI. Past performance may or may not be sustained in future and does not guarantee future return.The Portfolio Manager offers the option of direct onboarding of clients under Discretionary Services.

Source: NSE, Internal Research



NJ Asset Management Private Limited (SEBI Registration No. PM/INP000003518)			TWRR Returns(%)								
STRATEGY	INVESTMENT APPROACH NAME	AUM (IN INR CR)	1M	3M	6M	1YR	2YRS	3YRS	4YRS	5YRS	SINCE INCEPTION (March 12,2018)
Equity	Bluechip Portfolio - Equity Strategy	1,741.57	1.99	9.78	15.33	28.52	9.45	17.3	20.47	17.89	15.04
	Benchmark: Nifty 50 TRI	**	1.32	9.38	14.57	28.49	15.73	16.15	19.75	16.64	14.71

Past performance may or may not be sustained in future. Above performance data is not verified by SEBI. TWRR provided above are post expenses. Please note that performance of your portfolio may vary from that of other investors and that generated by the Investment Approach across all investors because of

- the timing of inflows and outflows of funds; and
- differences in the portfolio composition because of restrictions and other constraints.

Performance relative to other Portfolio Managers within the selected strategy is available on the link '<https://tinyurl.com/mr3ucm2v>'. The above disclosure is as per SEBI circular SEBI/HO/IMD/IMD-PoD-2/P/CIR/2022/172 dated December 16, 2022.

## BLUECHIP PORTFOLIO CALENDAR RETURNS

Period	Return(%)	Nifty 50 TRI(%)
<b>CY TD</b>	2.62	1.34
<b>CY 23</b>	26.80	21.30
<b>CY 2022</b>	-21.65	5.69
<b>CY 2021</b>	58.73	25.59
<b>CY 2020</b>	30.96	16.14
<b>CY 2019</b>	4.21	13.48
<b>CY 2018(12/03/18 to 31/12/18)</b>	4.56	5.53

Returns as on 29th February 2024

Past performance may or may not be sustained in future. Above performance data is not verified by SEBI. TWRR provided above are post expenses.

Please note that performance of your portfolio may vary from that of other investors and that generated by the Investment Approach across all investors because of

- The timing of inflows and outflows of funds; and
- Differences in the portfolio composition because of restrictions and other constraints.

Performance relative to other Portfolio Managers within the selected strategy is available on the link '<https://tinyurl.com/mr3ucm2v>'. The above disclosure is as per SEBI circular SEBI/HO/IMD/IMD-PoD-2/P/CIR/2022/172 dated December 16, 2022.



### Investment Objective:

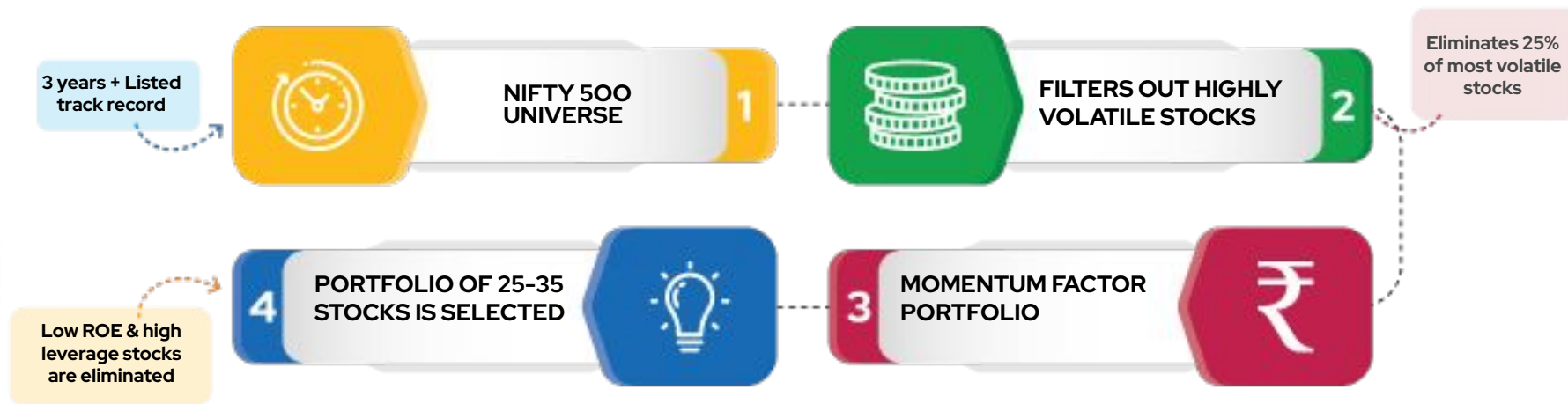
- To deliver capital appreciation over a long term from a diversified portfolio that predominantly invests in equity and equity related instruments across various market capitalization.

### The investment approach is as summarised below :

- Rule-based stock selection
- Focus on companies with superior momentum along with a volatility filter to eliminate most volatile stocks from sample
- Additional quality filter applied to avoid loss-making companies with substantial debt
- Flexible allocation to invest across market capitalisation
- Portfolio would be reviewed for re-balancing on a quarterly basis
- Allocation would be 80% to 100% in equity and equity related securities and 0% to 20% in debt oriented mutual funds, cash, liquid funds and arbitrage funds.

For detailed risk factors associated with investment approach, please refer to the Disclosure Document available on our website [www.njpms.in](http://www.njpms.in)

## MULTICAP PORTFOLIO OBJECTIVE & INVESTMENT APPROACH



- Model portfolio based weights allocated with a maximum threshold of 8% per stock at the time of rebalancing and 10% during the period of holding.
- Portfolio would be reviewed for re-balancing on a quarterly basis.
- This investment approach is 100% in equities and the relevant benchmark is NIFTY 50 TRI.

For detailed risk factors associated with investment approach, please refer to the Disclosure Document available on our website [www.njpms.in](http://www.njpms.in)

## 1 & 2 YEARS ROLLING RETURNS OF MULTICAP PORTFOLIO

	1 YEAR ROLLING RETURNS		2 YEAR ROLLING RETURNS	
	MULTICAP PORTFOLIO	NIFTY 50 TRI	MULTICAP PORTFOLIO	NIFTY 50 TRI
Count	2524	2524	2159	2159
Average Return	16.52%	15.55%	12.17%	14.19%
Medium	14.56%	13.47%	13.93%	13.51%
Maximum	95.03%	96.65%	66.16%	52.18%
Minimum	-36.04%	-32.69%	-25.42%	-11.60%
Out Performance against NIFTY 50 TRI	57.77%	-	54.75%	-

Performance data upto 12 months are Absolute Returns; Performance data more than 12 months are CAGR.TWRR provided above are post expenses. The above performance data is not verified by SEBI. Past performance may or may not be sustained in future and does not guarantee future return.The Portfolio Manager offers the option of direct onboarding of clients under Discretionary Services.

## 3 & 5 YEARS ROLLING RETURNS OF MULTICAP PORTFOLIO

	3 YEAR ROLLING RETURNS		5 YEAR ROLLING RETURNS	
	MULTICAP PORTFOLIO	NIFTY 50 TRI	MULTICAP PORTFOLIO	NIFTY 50 TRI
Count	1794	1794	1063	1063
Average Return	12.36%	14.54%	11.47%	14.38%
Medium	14.79%	15.05%	11.31%	14.21%
Maximum	35.61%	32.39%	26.96%	18.97%
Minimum	-13.89%	-4.46%	3.72%	10.98%
Out Performance against NIFTY 50 TRI	49.39%	-	15.52%	-

Performance data upto 12 months are Absolute Returns; Performance data more than 12 months are CAGR.TWRR provided above are post expenses. The above performance data is not verified by SEBI. Past performance may or may not be sustained in future and does not guarantee future return.The Portfolio Manager offers the option of direct onboarding of clients under Discretionary Services.

Source: NSE, Internal Research

NJ Asset Management Private Limited (SEBI Registration No. PM/INP000003518)			TWRR Returns(%)								
STRATEGY	INVESTMENT APPROACH NAME	AUM (IN INR CR)	1M	3M	6M	1YR	2YRS	3YRS	4YRS	5YRS	SINCE INCEPTION (April 2, 2016)
Equity	Multicap Portfolio - Equity Strategy	524.26	1.25	17.34	31.62	65.84	26.76	32.62	29.03	25.87	16.34
	Nifty 50 TRI	**	1.32	9.38	14.57	28.49	15.73	16.15	19.75	16.64	15.57

Past performance may or may not be sustained in future. Above performance data is not verified by SEBI. TWRR provided above are post expenses. Please note that performance of your portfolio may vary from that of other investors and that generated by the Investment Approach across all investors because of

- the timing of inflows and outflows of funds; and
- differences in the portfolio composition because of restrictions and other constraints.

Performance relative to other Portfolio Managers within the selected strategy is available on the link '<https://tinyurl.com/mr3ucm2v>'. The above disclosure is as per SEBI circular SEBI/HO/IMD/IMD-PoD-2/P/CIR/2022/172 dated December 16, 2022.



## PORTFOLIO QUALITY PARAMETERS



## PORTFOLIO QUALITY PARAMETERS

Return on Equity	
PORTFOLIO	AVERAGE
Bluechip Portfolio	30.87%
Multicap Portfolio	17.97%
Nifty 50 TRI	18.26%

Debt on Equity	
PORTFOLIO	AVERAGE
Bluechip Portfolio	12.12%
Multicap Portfolio	61.71%
Nifty 50 TRI	67.12%

Dividend Payout	
PORTFOLIO	AVERAGE
Bluechip Portfolio	55.14%
Multicap Portfolio	28.11%
Nifty 50 TRI	31.11%

Current Ratio	
PORTFOLIO	AVERAGE
Bluechip Portfolio	2
Multicap Portfolio	1.87
Nifty 50 TRI	1.64

Data as on February 29, 2024.

Debt on Equity calculated for non-lending companies.

Current Ratio is calculated for non-financial companies.

Dividend Payout not calculated for loss-making companies.



### Investment Objective:

- To generate capital appreciation in the long term through investments in equity oriented Mutual Fund schemes.

### The investment approach is as summarised below :

- Rule-based Mutual Fund selection with Concentrated Portfolio
- Portfolio Allocation:
  - Equity oriented Mutual Fund schemes (Direct Plans) (80%-100%)
  - Cash\*, Debt oriented Mutual Fund schemes, Liquid Funds and Arbitrage Funds (Direct Plans)(0%-20%)
- Portfolio would be reviewed for re-balancing on a yearly basis
- Benchmark is NIFTY 50 TRI. The basis for selection of benchmark is such that it is most suited for comparing the performance of the portfolio.

\*Marginal Cash Allocation on a/c of Portfolio rebalancing

For detailed risk factors associated with investment approach, please refer to the Disclosure Document available on our website [www.njpms.in](http://www.njpms.in)

## 1 & 2 YEARS ROLLING RETURNS OF FREEDOM PORTFOLIO

	1 YEAR ROLLING RETURNS		2 YEAR ROLLING RETURNS	
	FREEDOM PORTFOLIO	NIFTY 50 TRI	FREEDOM PORTFOLIO	NIFTY 50 TRI
Count	1916	1916	1551	1551
Average Return	14.49%	15.00%	14.59%	14.63%
Medium	9.98%	11.27%	14.03%	13.41%
Maximum	86.47%	96.65%	48.37%	52.18%
Minimum	-27.62%	-32.69%	-13.78%	-11.60%
Out Performance against NIFTY 50 TRI	50.42%	-	44.17%	-

Performance data upto 12 months are Absolute Returns; Performance data more than 12 months are CAGR.TWRR provided above are post expenses. The above performance data is not verified by SEBI. Past performance may or may not be sustained in future and does not guarantee future return.The Portfolio Manager offers the option of direct onboarding of clients under Discretionary Services.

### 3 YEARS ROLLING RETURNS OF FREEDOM PORTFOLIO

	3 YEAR ROLLING RETURNS	
	FREEDOM PORTFOLIO	NIFTY 50 TRI
Count	1186	1186
Average Return	17.37%	17.28%
Medium	17.75%	16.48%
Maximum	29.99%	32.39%
Minimum	5.61%	8.36%
Out Performance against NIFTY 50 TRI	64.00%	-

Performance data upto 12 months are Absolute Returns; Performance data more than 12 months are CAGR.TWRR provided above are post expenses. The above performance data is not verified by SEBI. Past performance may or may not be sustained in future and does not guarantee future return.The Portfolio Manager offers the option of direct onboarding of clients under Discretionary Services.

Source: NSE, Internal Research

NJ Asset Management Private Limited (SEBI Registration No. PM/INP000003518)			TWRR Returns(%)								
STRATEGY	INVESTMENT APPROACH NAME	AUM (IN INR CR)	1M	3M	6M	1YR	2YRS	3YRS	4YRS	5YRS	SINCE INCEPTION (December 1 ,2017)
Equity	Freedom Portfolio - Equity Strategy	124.43	2.23	11.00	18.76	39.26	19.41	18.90	21.00	18.97	14.03
	Nifty 50 TRI	**	1.32	9.38	14.57	28.49	15.73	16.15	19.75	16.64	14.58

Past performance may or may not be sustained in future. Above performance data is not verified by SEBI. TWRR provided above are post expenses. Please note that performance of your portfolio may vary from that of other investors and that generated by the Investment Approach across all investors because of

- the timing of inflows and outflows of funds; and
- differences in the portfolio composition because of restrictions and other constraints.

Performance relative to other Portfolio Managers within the selected strategy is available on the link '<https://tinyurl.com/mr3ucm2v>'. The above disclosure is as per SEBI circular SEBI/HO/IMD/IMD-PoD-2/P/CIR/2022/172 dated December 16, 2022.





### Investment Objective:

- To generate capital appreciation over a long term through investments in equity oriented exchange traded funds (ETFs), index funds, fund of funds and equity schemes which have underlying as Indian indices, foreign indices and foreign stocks.

### The investment approach is as summarised below :

- Equity Oriented Exchange Traded Fund/Index Fund/FoFs/Fund investing in foreign securities - 80% to 100%
- Cash, Debt Oriented Mutual Funds, Liquid Funds, and Arbitrage Funds - 0% to 20%
- Rule-based selection of 2 out of 3 Indian ETFs tracking Nifty 50, Nifty Next 50 & Nifty Midcap 150 indices
- Rule-based selection of ETFs/Fund of Funds/Equity schemes tracking foreign indices
- ETF selection and allocation currently with underlying NIFTY 50 (45%), NIFTY Midcap 150 - (30%) & NASDAQ 100 - (25%)
- Portfolio is rebalanced annually unless there is a significant change in allocation due to indices performance
- Benchmark is NIFTY 50 TRI. The basis of benchmark is such that it is most suited for comparing performance of the portfolio

For detailed risk factors associated with investment approach, please refer to the Disclosure Document available on our website [www.njpms.in](http://www.njpms.in)

## DIVERSIFICATION IS THE ONLY FREE LUNCH

STATISTICS	SENSEX	SENSEX & NASDAQ
CAGR	13%	16%
<b>Standard deviation</b>	<b>25%</b>	<b>20%</b>
<b>Downside deviation</b>	<b>15%</b>	<b>12%</b>
Sharpe ratio	0.25	0.44
Sortino ratio	0.41	0.72
Worst drawdown	-61%	-60%
Worst month return	-31%	-18%
Best month return	42%	27%
Profitable months	58%	62%

- All the Index values are INR denominated
- All portfolios are rebalanced yearly
- Back-tested period is from January 1, 1986 to July 31, 2020 (approx. 35 yrs)

## 1 & 2 YEARS ROLLING RETURNS OF FREEDOM ETF PORTFOLIO

	1 YEAR ROLLING RETURNS		2 YEAR ROLLING RETURNS	
	FREEDOM ETF PORTFOLIO	NIFTY 50 TRI	FREEDOM ETF PORTFOLIO	NIFTY 50 TRI
Count	1818	1818	1453	1453
Average Return	13.01%	15.58%	12.87%	15.06%
Medium	7.14%	12.26%	12.05%	14.13%
Maximum	83.09%	96.65%	47.78%	52.18%
Minimum	-30.84%	-32.69%	-15.17%	-11.60%
Out Performance against NIFTY 50 TRI	34.54%	-	20.17%	-

Performance data upto 12 months are Absolute Returns; Performance data more than 12 months are CAGR.TWRR provided above are post expenses. The above performance data is not verified by SEBI. Past performance may or may not be sustained in future and does not guarantee future return.The Portfolio Manager offers the option of direct onboarding of clients under Discretionary Services.

Source: NSE, Internal Research

### 3 YEARS ROLLING RETURNS OF FREEDOM ETF PORTFOLIO

	3 YEAR ROLLING RETURNS	
	FREEDOM ETF PORTFOLIO	NIFTY 50 TRI
Count	1088	1088
Average Return	15.66%	17.75%
Medium	15.97%	16.85%
Maximum	27.01%	32.39%
Minimum	7.40%	10.41%
Out Performance against NIFTY 50 TRI	10.39%	-

Performance data upto 12 months are Absolute Returns; Performance data more than 12 months are CAGR.TWRR provided above are post expenses. The above performance data is not verified by SEBI. Past performance may or may not be sustained in future and does not guarantee future return.The Portfolio Manager offers the option of direct onboarding of clients under Discretionary Services.

Source: NSE, Internal Research

## FREEDOM ETF PORTFOLIO (TWRR)

NJ Asset Management Private Limited (SEBI Registration No. PM/INP000003518)			TWRR Returns(%)								
STRATEGY	INVESTMENT APPROACH NAME	AUM (IN INR CR)	1M	3M	6M	1YR	2YRS	3YRS	4YRS	5YRS	SINCE INCEPTION (March 9 ,2018)
Equity	Freedom ETF Portfolio - Equity Strategy	185.35	1.20	10.27	16.35	39.82	16.21	16.43	19.51	15.74	12.25
	Nifty 50 TRI	**	1.32	9.38	14.57	28.49	15.73	16.15	19.75	16.64	15.05

Past performance may or may not be sustained in future. Above performance data is not verified by SEBI. TWRR provided above are post expenses. Please note that performance of your portfolio may vary from that of other investors and that generated by the Investment Approach across all investors because of

- the timing of inflows and outflows of funds; and
- differences in the portfolio composition because of restrictions and other constraints.

Performance relative to other Portfolio Managers within the selected strategy is available on the link '<https://tinyurl.com/mr3ucm2v>'. The above disclosure is as per SEBI circular SEBI/HO/IMD/IMD-PoD-2/P/CIR/2022/172 dated December 16, 2022.

## BALANCED ADVANTAGE PORTFOLIO (BAP)



### Investment Objective:

- To generate capital appreciation in the long term through investments in Hybrid mutual fund schemes.

### This approach shall invest in following securities:

- Rule-based Hybrid mutual fund selection with Concentrated Portfolio

### Portfolio Allocation:

- Balanced Advantage / Dynamic Asset Allocation Fund (Direct Plans) (80%-100%)
- Cash, Debt oriented Mutual Fund schemes, Debt Exchange Traded Funds, Liquid Funds and Arbitrage Funds (Direct Plans)(0%-20%)
- Portfolio would be reviewed for re-balancing on a yearly basis
- Benchmark is NIFTY 50 Hybrid Composite Debt 50:50 Index. The basis for selection of benchmark is such that it is most suited for comparing performance of the portfolio.

\*Marginal Cash Allocation on a/c of Portfolio rebalancing

For detailed risk factors associated with investment approach, please refer to the Disclosure Document available on our website [www.njpms.in](http://www.njpms.in)

## 1 YEARS ROLLING RETURNS OF BAP

	1 YEAR ROLLING RETURNS	
	BALANCED ADVANTAGE PORTFOLIO	NIFTY 50 HYBRID COMPOSITE DEBT 50:50 INDEX
Count	455	455
Average Return	10.69%	9.44%
Medium	11.32%	9.61%
Maximum	26.84%	18.59%
Minimum	0.19%	0.84%
Out Performance against NIFTY 50 TRI	52.53%	-

Performance data upto 12 months are Absolute Returns; Performance data more than 12 months are CAGR.TWRR provided above are post expenses. The above performance data is not verified by SEBI. Past performance may or may not be sustained in future and does not guarantee future return.The Portfolio Manager offers the option of direct onboarding of clients under Discretionary Services.

Source: NSE, Internal Research



## BAP PORTFOLIO (TWRR)

NJ Asset Management Private Limited (SEBI Registration No. PM/INP000003518)			TWRR Returns (%)								
STRATEGY	INVESTMENT APPROACH NAME	AUM (IN INR CR)	1M	3M	6M	1YR	2YRS	3YRS	4YRS	5YRS	SINCE INCEPTION (December 1 ,2021)
Hybrid	Balanced Advantage Portfolio - Hybrid Strategy	131.72	2.08	9.21	14.47	26.40	14.46	-	-	-	11.71
	Benchmark : Nifty 50 Hybrid Composite Debt 50:50 Index	**	1.17	6.12	9.22	18.33	10.86	-	-	-	9.24

Past performance may or may not be sustained in future. Above performance data is not verified by SEBI. TWRR provided above are post expenses. Please note that performance of your portfolio may vary from that of other investors and that generated by the Investment Approach across all investors because of

- The timing of inflows and outflows of funds; and
- Differences in the portfolio composition because of restrictions and other constraints.

Performance relative to other Portfolio Managers within the selected strategy is available on the link '<https://tinyurl.com/mr3ucm2v>'.

The above disclosure is as per SEBI circular SEBI/HO/IMD/IMD-PoD-2/P/CIR/2022/172 dated December 16, 2022.



### Investment Objective:

- To generate reasonable returns commensurate with low risk by investing in appropriate Mutual Fund schemes.

### Investment Horizon: Short Term

### This approach shall invest in following securities:

- Arbitrage Funds (Direct Plans) (0-100%)
- Liquid Funds (Direct Plans) (0-100%)
- Overnight Funds (Direct Plans) (0-50%)

### Portfolio Allocation:

- Schemes selected based on low credit risk and interest rate risks, consistency of performance, lower exit load.
- Investments in any Mutual Fund scheme shall generally not be greater than 45% of portfolio
- Single AMC exposure will generally be restricted to 70% of the portfolio
- Rebalancing of portfolio reviewed annually
- Benchmark is Nifty medium to long duration debt index. The basis for selection of benchmark is such that it is most suited for comparing performance of the portfolio.

For detailed risk factors associated with investment approach, please refer to the Disclosure Document available on our website [www.njpms.in](http://www.njpms.in)

## LIQUID PORTFOLIO (TWRR)

NJ Asset Management Private Limited (SEBI Registration No. PM/INP000003518)			TWRR Returns (%)								
STRATEGY	INVESTMENT APPROACH NAME	AUM (IN INR CR)	1M	3M	6M	1YR	2YRS	3YRS	4YRS	5YRS	SINCE INCEPTION (September 30,2020)
Debt	Liquid Portfolio - Debt Strategy	32.51	0.57	1.75	3.42	7.00	6.06	5.05	-	-	4.79
	Benchmark : Nifty Medium to Long Duration Debt Index	**	1.13	2.78	3.78	8.65	5.64	5.90	-	-	5.55

Past performance may or may not be sustained in future. Above performance data is not verified by SEBI. TWRR provided above are post expenses. Please note that performance of your portfolio may vary from that of other investors and that generated by the Investment Approach across all investors because of

- The timing of inflows and outflows of funds; and
- Differences in the portfolio composition because of restrictions and other constraints.

Performance relative to other Portfolio Managers within the selected strategy is available on the link '<https://tinyurl.com/mr3uclm2v>' .

The above disclosure is as per SEBI circular SEBI/HO/IMD/IMD-PoD-2/P/CIR/2022/172 dated December 16, 2022.

## COMMON FEATURES

Minimum Investment Per Client	→	INR 50 Lakh*, Multiples of INR 1 thereafter
Minimum Investment per Investment Approach for Bluechip and Multicap Portfolios	→	INR 25 Lakh, Multiples of INR 1 thereafter
Minimum Investment per Investment Approach (Excl Bluechip and Multicap Portfolios)	→	INR 5 Lakh for Freedom & Freedom ETF, BAP & Liquid IAs.
Additional Top Up	→	1 Lac for existing Investment Approach
Mode of Investment	→	Cheque, RTGS, NEFT, Security Transfer (Sell)
Exit Fees	→	1% on withdrawal amount (If redeemed within 1 year) No Exit Fees on Liquid Portfolio
Audit Fees	→	Upto INR 1200 Per Annum (Currently INR 590 Per Annum)**

\*Subject to change as per SEBI ( Portfolio Managers ) Regulations, 2020. | \*\* May change from time to time

**Note:** The Portfolio Manager offers the option of direct on-boarding to clients under the Discretionary Services. At the time of on-boarding of clients directly, no charges except statutory charges shall be levied for the on-boarding. The Client may download the application Form from the website of the Portfolio Manager at [www.njpms.in](http://www.njpms.in) for availing the Portfolio Management Services and submit the same with required details and documents for direct on-boarding at the office of the Portfolio Manager.

Investing in securities involves certain risks and considerations associated generally with making investments in securities. The value of the portfolio investments may be affected generally by factors affecting financial markets, such as price and volume, volatility in interest rates, currency exchange rates, changes in regulatory and administrative policies of the Government or any other appropriate authority (including tax laws) or other political and economic developments. Consequently, there can be no assurance that the objective of the Portfolio would be achieved. The value of the portfolios may fluctuate and can go up or down. Prospective investors are advised to carefully review the Disclosure Document, Client Agreement, and other related documents carefully and in its entirety and consult their legal, tax and financial advisors to determine possible legal, tax and financial or any other consequences of investing under this Portfolio and to understand the risk factors, before making an investment decision. Please note that past performance of the financial products, instruments and the portfolio does not necessarily indicate the future prospects and performance thereof. Such past performance may or may not be sustained in future. Portfolio Manager's investment decisions may not be always profitable, as actual market movements may be at variance with anticipated trends. The investors are not being offered any guaranteed or assured returns. The PM may be engaged in buying/selling of such securities.

Individual returns of Clients for a particular portfolio type may vary significantly from the data on performance of the portfolios as may be depicted by the Portfolio Manager from time to time. This is due to factors such as timing of entry and exit, timing of additional flows and redemptions, individual client mandates, specific portfolio construction characteristics or structural parameters, which may have a bearing on individual portfolio performance. No claims may be made or entertained for any variances between the performance depictions and individual portfolio performance. Neither NJ Asset Management Private Limited (erstwhile NJ Advisory Services Private Limited) (the "Portfolio Manager" or "PM") nor its Directors or Employees shall be in any way liable for any variations noticed in the returns of individual portfolios. The Client shall not make any claim against the Portfolio Manager against any losses (notional or real) or against any loss of opportunity for gain under various PMS Products, on account of or arising out of such circumstance/ change in market condition or for any other reason which may specifically affect a particular sector or security.

All data/information used in the preparation of this material is dated and may or may not be relevant any time after the issuance of this material. The Portfolio Manager/ the PM take no responsibility of updating any data/information in this material from time to time. In the preparation of this material the PM has used information that is publicly available, including information developed in-house. Some of the material used herein may have been obtained from members/persons other than the PM and/or its affiliates and which may have been made available to the PM and/or to its affiliates. Information gathered and material used herein is believed to be from reliable sources. The PM however does not warrant the accuracy, reasonableness and/or completeness of any information. For data reference to any third party in this material no such party will assume any liability for the same. We have included statements/opinions/recommendations in this material, which contain words, or phrases such as "will", "expect", "should", "believe" and also PE ratios, EPS and Earnings Growth for forthcoming years and similar expressions or variations of such expressions that are "forward looking statements". Actual results may differ materially from those suggested by the forward looking statements due to risk or uncertainties associated with our expectations with respect to, but not limited to, exposure to market risks, general economic and political conditions in India and other countries globally, the monetary and interest policies of India, inflation, unanticipated turbulence in interest rates, foreign exchange rates, equity prices, the performance of the financial markets in India and globally, changes in domestic and foreign laws, regulations and taxes and changes in competition in the industry.

# THANK YOU

☎ 0261-4025000 / 0261-6155000

✉ [sales.pms@njgroup.in](mailto:sales.pms@njgroup.in) 🌐 [www.njpms.in](http://www.njpms.in)